

TOPCASED

Toolkit in Open-Source for Critical Application & Systems Development

TOPCASED 2.5 UML Editor tutorial

Raphaël Faudou



Agenda

- What's new in this tutorial ?
- Create a new TOPCASED project/model
- Edit a diagram
- Document the model elements
- Autoresize the diagram
- Export the diagram as an image
- Add a diagram
- Adjust the structure of the model
- Validate a model
- Specialization of items – UML profile
- Navigation in the diagrams
- Version management of models
- Collaborative management of models
- Work in « out-sourcing » mode
- Search the models



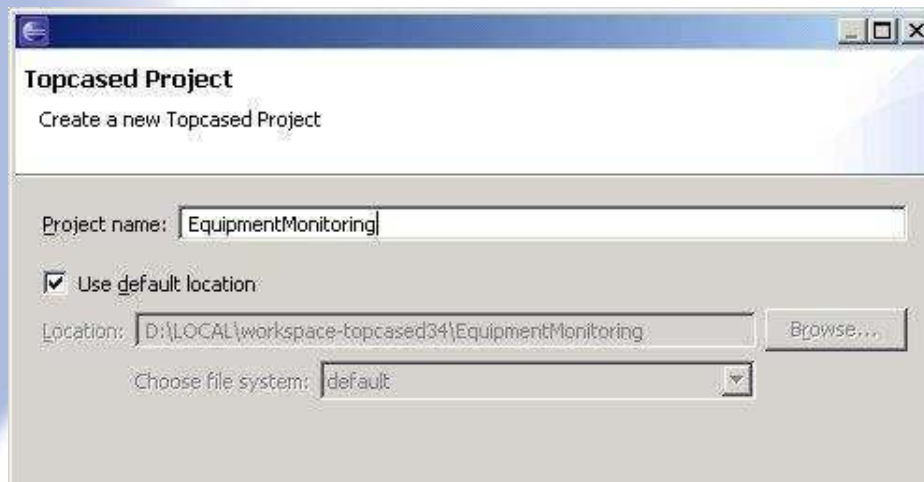
What's new in this tutorial ?

- Multi creation element ([slide 10](#))
- Customize figure's element using stereotype ([slide 29](#))
- Validate a model ([slide 23](#))
- You can consult the release note to find all news on TOPCASED 2.5:
 - ▶ <http://gforge.enseeiht.fr/frs/download.php/2003/ReleaseNote2.4.0.pdf>

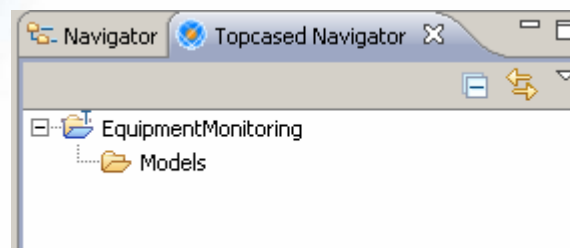


Create a TOPCASED project

- TOPCASED Perspective
 - ▶ Helps in creating the project



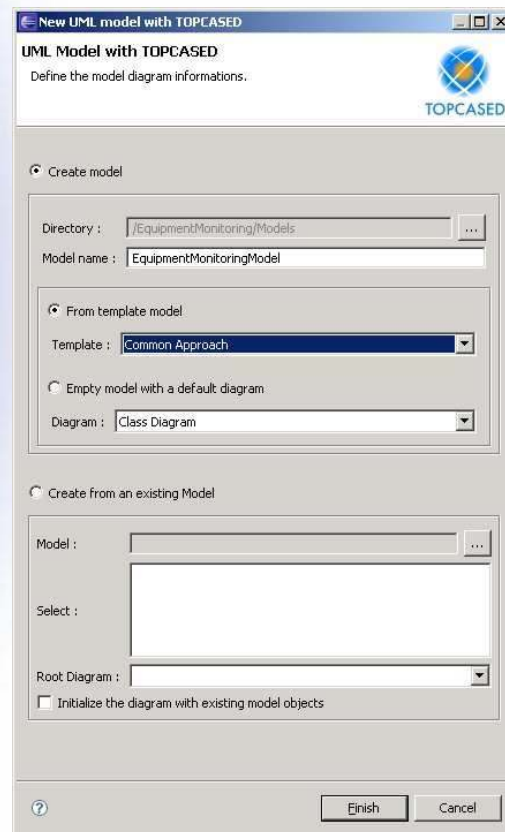
- A project of type « TOPCASED » is created with a « models » directory





Create a new model (1/2)

- Blank model or a model created based on a template (structure and diagrams)
 - ▶ Different templates according to the editor
 - ▶ Possibility of adding other templates (plug-in)



[Click here to download full PDF material](#)